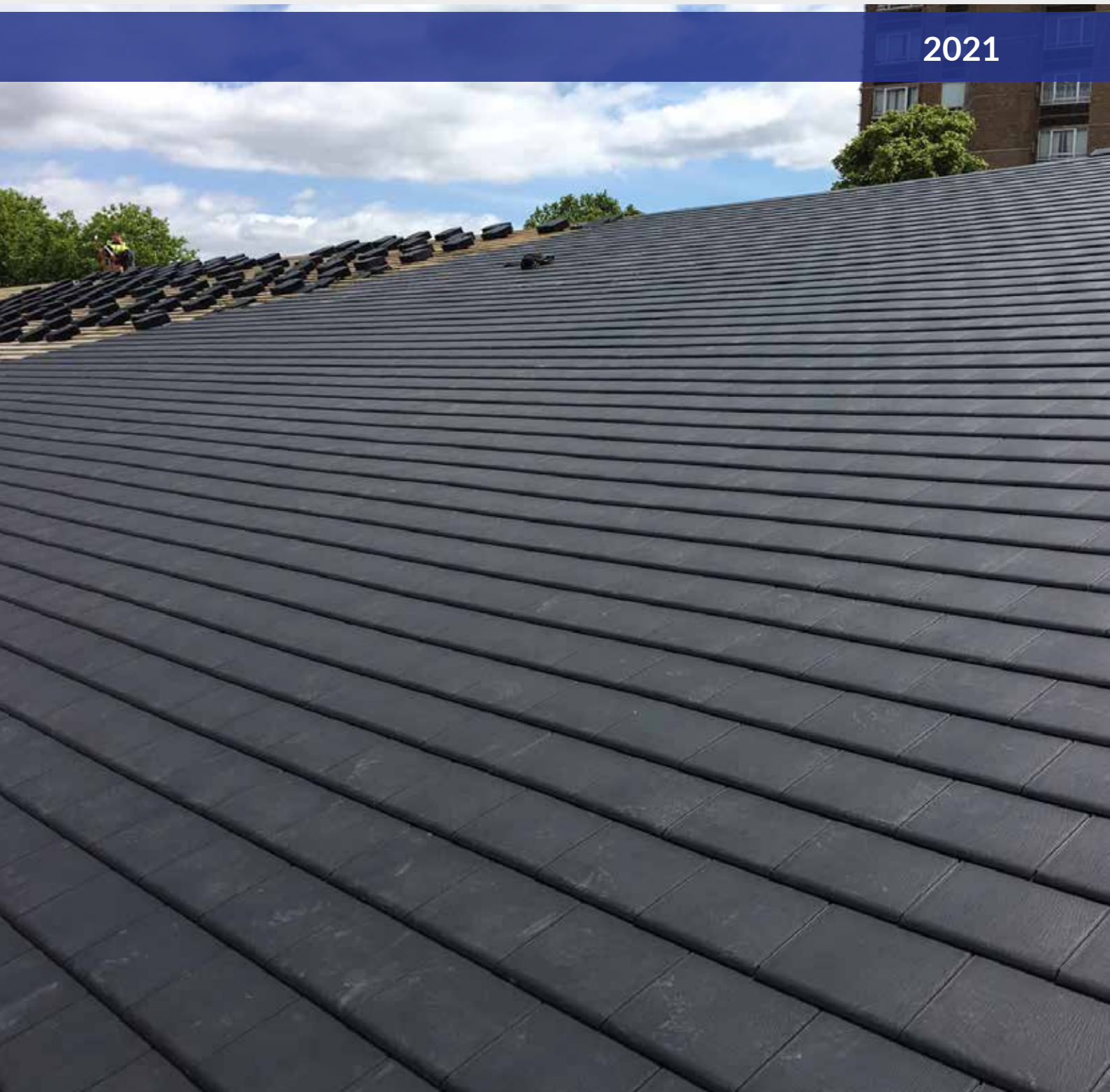


# ENVIROTILE TRADE GUIDE

ISSUE 2

2021



# INTRODUCTION

## RECYCLED POLYMER, LIGHTWEIGHT ROOF TILE



Roofing has its own challenges... Envirotile, the revolutionary, lightweight, interlocking roof tile system makes your job easier!

Envirotile ticks all the boxes for its technical design and helps promote better working conditions for roofers - minimising risk and conforming to the Health & Safety at Work Policy.

Being only 20% of the weight of a concrete tile Envirotile reduces carrying load weights and the unique polymer material (made from 75% recycled product) means there's no dust during cutting.

Envirotiles also assist with improved foot grip whilst traversing the covered tiled roof - and they're virtually unbreakable!

A flat, precision manufactured, recycled polymer, lightweight roof tile with excellent green credentials. Produced in two finish effect options - our original tile with a textured finish and our latest addition of the slate-effect finish - both are aesthetically pleasing in all aspects. Extremely simple to fix yet performs exceptionally, locking into adjacent tiles to form a fully integrated roof covering. Envirotile performs to roof pitches as low as 12.5 degrees.

Envirotile is the most advanced roof tile available; affordable, high performing and environmentally friendly. Envirotile actually helps to reduce build and labour costs.

## BENEFITS OF ENVIROTILE ROOF TILES



Lightweight and easy to install



Textured or slate-effect finish



Less tiles per roof



More secure with unique fitting system



Can be installed to a minimum 12.5° pitch



25-year Guarantee for peace of mind

# UNIQUE DESIGN - STORM TESTED



## Unique design with superior performance

- ▶ Manual dry cutting can be performed at secured height level with no atmospheric dust
- ▶ Outperforms traditional roofing materials
- ▶ Uses 75% recycled materials
- ▶ Supports sustainable homes initiatives when meeting new build standards
- ▶ Is easier to use and fit than conventional tiles
- ▶ Our products combine superior sustainable performance with unique technical features

With the unique interlocking fixing system - Envirotile has unrivalled performance and is quick and easy to install. They are fully guaranteed to perform against severe UK wind loads in any designated zonal area within the UK and we offer a free replacement service for dislodged roof tiles caused by gale force winds up to 65mph (subject to our Terms & Conditions). The Envirotile 8 Fix proven performance guarantee is in addition to our standard 25-year product guarantee.

## Warranty Details Envirotile

Envirotile is covered by a Twenty Five (25) year Warranty against material product defect or failure of the product to perform on a roof as an effective roofing product, when subject to normal use. For the full terms and conditions of this warranty please ask our branch staff for further documentation.





# ENVIROTILE FINISH AND COLOUR

## FINISH AND COLOURS



The Envirotile range of products have the following key benefits:-

- ▶ BBA Certified
- ▶ Conforms to BS 5534:2014
- ▶ Greenspec Endorsed
- ▶ Quick installation requiring minimal skilled labour
- ▶ Lightweight roof covering system - less than 8 kilos per m<sup>2</sup> coverage
- ▶ Envirotile is 80% lighter than concrete roof tile
- ▶ No harmful dust created during the cutting process
- ▶ Complete dry fix system - no cement needed
- ▶ Proven and tested at a low degree pitch of 12.5° against wind driven rain
- ▶ Weather tested to 147mph wind loads
- ▶ Improved grip surface
- ▶ Virtually unbreakable
- ▶ Anti-fungal properties
- ▶ Low maintenance
- ▶ UK manufactured
- ▶ Ridge products available
- ▶ Fully recyclable, manufactured from recycled plastics
- ▶ 25 year Guarantee



### Colours available



## HR FIREPROOF UNDERLAY



### A quick guide to BS 5534 and roofing underlays

Under the new British Standards, many brands of underlay currently used will no longer be suitable to fit on UK roofs under the new standards. Envirolay Premier has been fully tested and exceeds the requirements of BS 5534 so you can rest assured you are using an underlay that is fit for purpose.

Roofing underlays reduce the wind load on the roof tiles by absorbing some of the wind load. Underlay must be fitted to manufacturers instructions. The current Code of Practice recommends the use of an additional timber batten installed over the horizontal lap between underlay courses as a preventative measure, although many roofers feel this is a trip hazard. The European Standard does not cover this issue so even underlays that are CE marked may not comply with the new Code of Practice.

Under the new Code of Practice there is a single test to measure the wind uplift resistance for underlays. All testing bodies will now follow this test. Envirolay Premier Roofers' HR Underlay complies with and exceeds the requirements of the test.

Slight sag in membrane allows moisture to drain in the middle of the rafter centres and prevents water tracking back through the fixings.

- ▶ Fire Resistant
- ▶ Exova Tested
- ▶ BS EN ISO 11925-2:2010
- ▶ DD CEN/TS 1187:2012 Test 4
- ▶ BS 5534:2014
- ▶ BRE Tested
- ▶ For use in all 1-5 Zonal Areas
- ▶ With or without the need of Duo Tape
- ▶ Suitable for most types of roof structures
- ▶ Cold Roof
- ▶ Warm Roof
- ▶ Solid Roof (Scotland)

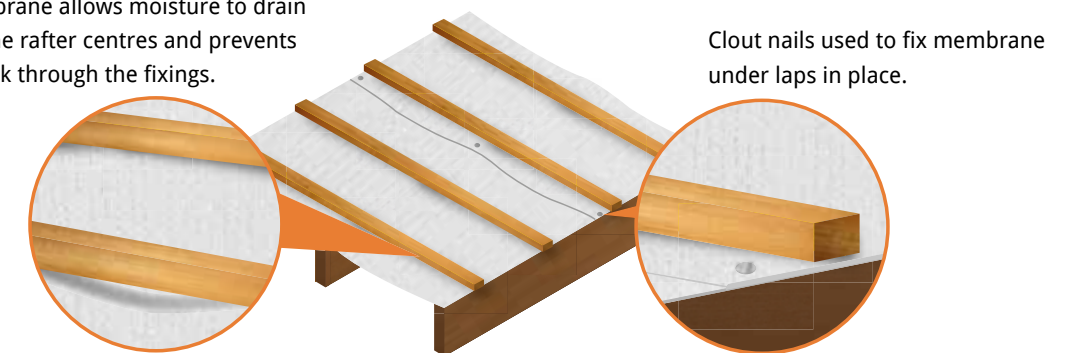


Diagram above shows: Overlap, batten gauge, sag and fixing of Envirolay Premier Roofers' HR Underlay

# ENVIROTILE SLATE

## COMPONENTS LIST

Envirotile Slate Single – Size: L:365mmxW:325mmxD:11mm

Slate Grey ENVLSLSSG

Dark Brown ENVLSLBBR

Terracotta ENVLSLSTR

Anthracite Grey ENVLSLSBK

Envirotile Slate Double – Size: L:365mmxW:630mmxD:11mm

Slate Grey ENVSLDSSG

Dark Brown ENVSLDBBR

Terracotta ENVSLDSTR

Anthracite Grey ENVSLDSBK

Envirotile Slate Half – Size: L:365mmxW:175mmxD:11mm

Slate Grey ENVSLHSSG

Dark Brown ENVSLHBBR

Terracotta ENVSLHSTR

Anthracite Grey ENVSLHSBK



Ridge Cap – Size: L:425mmxW:245mmxH:105mm

Slate Grey ENVSLRCSG

Dark Brown ENVSLRCBBR

Terracotta ENVSLRCTR

Anthracite Grey ENVSLRCBK

Gable End Cap – Size: L:28mmxW:325mmxH:178mm

Slate Grey ENVSLGEPSSG

Dark Brown ENVSLGEPBBR

Terracotta ENVSLGEPSTR

Anthracite Grey ENVSLGEPBK

Hip Cap – Size: L:425mmxW:165mmxH:70mm

Slate Grey ENVSLHCSG

Dark Brown ENVSLHCBBR

Terracotta ENVSLHCTR

Anthracite Grey ENVSLHCBK

Hip End Cap – Size: L:180mmxW:165mmxH:90mm

Slate Grey ENVSLHECSSG

Dark Brown ENVSLHECBBR

Terracotta ENVSLHECTR

Anthracite Grey ENVSLHECBK

Ridge To Apex – Size: L:252mmxW:292mmxH:145mm

Slate Grey ENVSLRACSSG

Dark Brown ENVSLRACBBR

Terracotta ENVSLRACTR

Anthracite Grey ENVSLRACBK



# ENVIROTILE STANDARD

## COMPONENTS LIST

Envirotile Standard Single – Size: L:365mmxW:325mmxD:11mm

Anthracite Black ENVSTSAG

Slate Grey ENVSTSGY

Dark Brown ENVSTSBBR

Terracotta ENVSTSTR

Envirotile Standard Double – Size: L:365mmxW:630mmxD:11mm

Anthracite Black ENVSTDAG

Slate Grey ENVSTDGY

Dark Brown ENVSTDBBR

Terracotta ENVSTDTR



Ridge Cap – Size: L:475mmxW:300mmxH:170mm

Anthracite Black ENVSTRCAG

Slate Grey ENVSTRCGY

Dark Brown ENVSTRCBBR

Terracotta ENVSTRCTR

Gable End Cap – Size: L:30mmxW:300mmxH:170mm

Anthracite Black ENVSTGECAG

Slate Grey ENVSTGECGY

Dark Brown ENVSTGECBBR

Terracotta ENVSTGECTR

Hip Cap – Size: L:425mmxW:150mmxH:70mm

Anthracite Black ENVSTHCAG

Slate Grey ENVSTHCGY

Dark Brown ENVSTHCBBR

Terracotta ENVSTHCTR

Hip End Cap – Size: L:180mmxW:150mmxH:70mm

Anthracite Black ENVSTHECAG

Slate Grey ENVSTHECGY

Dark Brown ENVSTHECBBR

Terracotta ENVSTHECTR

Ridge To Apex – Size: L:280mmxW:300mmxH:170mm

Anthracite Black ENVSTRTAAG

Slate Grey ENVSTRTAGY

Dark Brown ENVSTRTABBR

Terracotta ENVSTRTATR





# ENVIROTILE SLATE/STANDARD

## COMPONENTS LIST

Standard Lowline Vent –  
Size: L:365mmxW:325mmxD:11mm + Profile

Anthracite Grey ENVSTLVTAG

Grey ENVSTLVGY

Brown EENVSTLVBR

Terracotta ENVSTLVTR

Standard Cowl Vent –  
Size: L:365mmxW:325mmxD:11mm + Profile

Anthracite Grey ENVSTCVTAG

Grey ENVSTCVGY

Brown ENVSTCVBR

Terracotta ENVSTCVTR

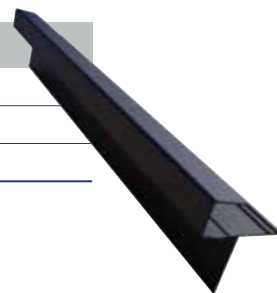


3m Dry Verge – Size: L:3000mm

Anthracite Grey ENV3MDVAG

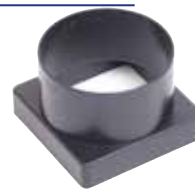
Brown ENV3MDVBR

Terracotta ENV3MDVTR



Square to Round Pipe Adaptor – Size: 110mm

Square to Round Pipe Adaptor ENVSRPA110



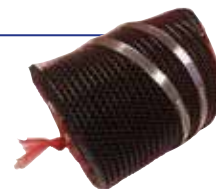
Ventilated Eaves Bar/Starter Rail –  
Size: L:600mmxW:48mmxH:12mm

Eave Bar ENVEB



Flexitube and clips – Size: 112mm

Flexitube and clips ENVFXCL



Dry Verge Bracket

Anthracite Grey ENVDVBAG

Brown ENVDVBR

Terracotta ENVDVBTR



## COMPONENTS LIST

Screw Cover Cap – Size: Large

Anthracite Grey ENVSCCLAG

Grey ENVSCCLGY

Brown ENVSCCLBR

Terracotta ENVSCCLTR

Screw Cover Cap – Size: Small

Anthracite Grey ENVSCCSAG

Grey ENVSCCSGY

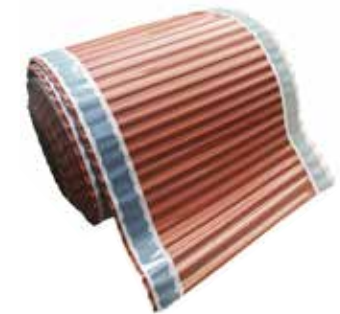
Brown ENVSCCSBR

Terracotta ENVSCCSSTR



Aluminium Hip Roll – Size: Dx180mmxL:6000mm

Aluminium Hip Roll 180mm ENV180HIPROLL



Fixings

90 x 6.3mm SS Pozi Pan Self Tapping Screw ENVSCREW90

32 x 4.2mm SS Pozi Pan Self Tapping Screw ENVSCREW32

Duo Plus Tape – Size: Dx40mmxL:6000mm

Duo Plus Tape ENVTAPE



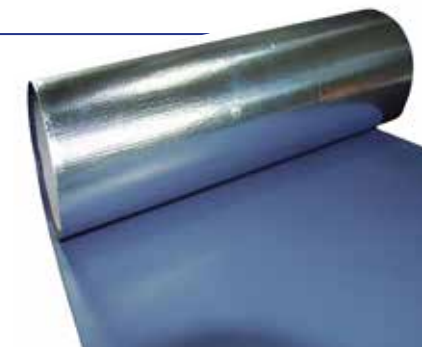
Ventilated Ridge Roll – Size: Dx330mmxL:6000mm

Ventilated Ridge Roll 330mm ENV330RIDGEROLL



Enviroloy – Size: Size: Dx130mmxL:25000mm

Enviroloy ENVIROLAY





# FOR ALL ROOF TYPES

## LIGHTWEIGHT CONSERVATORY



## MAIN FRAME ROOFING



# BACKED BY THE PROFESSIONALS

## CERTIFICATION

Envirotile has undertaken rigorous testing with many professional bodies so that we can ensure that it is more than fit-for-purpose and will withstand all the British weather will throw at it.

It is backed by GreenSpec which is the foremost 'Green Building' resource in the UK. Independent of companies and trade bodies and launched in 2003 with government funding, GreenSpec promotes sustainable building products, materials and construction techniques.



EN 13859-1  
2012



Test No. P101133-  
1000 Issue: 2



BS5534



Product specification is subject to change without notification. Please also note that colours shown are illustrative only, as the printing process does not allow 100% accurate colours to be reproduced.



Full  
product  
range



Deeplas Roofline



Coastline Lightweight  
Composite Cladding



Equinox Tiled Roof  
System



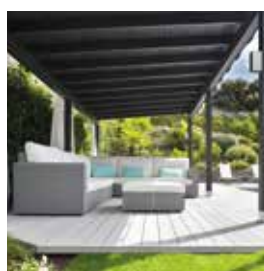
Skypod Lantern Roofs



Twinson Premium  
Cladding



Internal Wall  
and Ceiling Panels



Twinson Decking



Roomline PVC-U Skirting



Deeplas Embossed  
Cladding



Slateskin GRP  
Sheet Tile System



Deeplas Window  
Boards



Rainwater



Shower Panels



Garden Buildings

## Customer service

If you need any assistance, please call the Customer Services team on the following number or visit [deeplas.co.uk](http://deeplas.co.uk)



**0800 988 7307**